

SMARTDRIVE PROTECT

Windshield/Windscreen Replacement Guide for the SmartDrive Protect Safety Device North America/United Kingdom (NA/UK)

Author: Blayden Thompson

Version 1.0

March 2023

Getting Started

Before getting into the vehicle, download the **SmartDrive Protect Companion** app in the Apple or Google Play store and install it on your iOS or Android phone or tablet. The app will assist you with completing the installation of the device.

As you install the device, there are a few things to keep in mind.

Please review our best practices recommendations and precautions prior to use of the device at https://kb.omnitracs.com/SmartDrive/SmartDrive_Protect.



This device does not replace a driver's obligation to be attentive to the surrounding environmental and traffic conditions or to drive in a legal and responsible manner without any distraction of any sort. Drivers should not rely on the device's warnings as a substitute for their own judgment and attention.

If you need assistance, we are here to help! Please contact us via phone at **(800) 541-7490**, (Option 2 then Option 6), email at protectsupport@solera.com, or web at <https://www.omnitracs.com/contact-us>.



Login Credentials

Before you start, make sure you have login credentials for the SmartDrive Protect companion app.

Contact your Fleet Manager to create Installer Credentials in SD Protect

- Select Drivers
- Select the Add Driver button.
- Enter Driver information, User type = Installer
- Select the Add driver button at the bottom of the form.
- The installer will receive an email from protectsupport@solera.com, with a temporary password. Once the installer enters the temporary password in the companion app it will ask the installer to create a password of their choice.

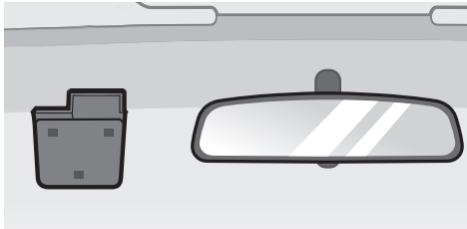
SmartDrive Protect Windshield Replacement Kit (65-JE360-1)

- VHB Mounting Plate
- Cable Tie
- Cable Clip
- Alcohol Pads
- Thermal Transfer Label

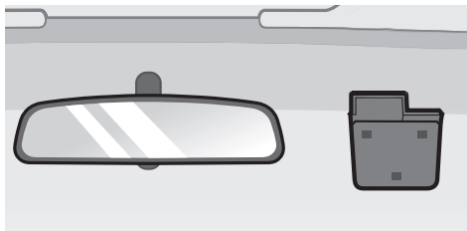


1. Remove the camera from the windshield/windscreen. Slide the camera to the left, then pull away from the glass.
2. Remove the cable from the cable clips

North America

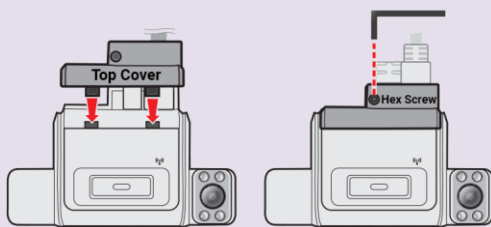


United Kingdom

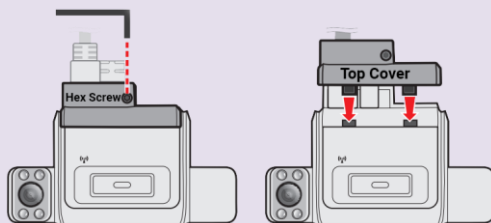


3. Clean the window with an alcohol swab where you intend to mount the device. We recommend mounting near the top center of the windshield, but in an area that:
 - Adheres to your country, state, and/or municipality's mounting laws.
 - **Does not** obscure the driver's view.
 - Cabling and camera **do not** block airbag deployment.
 - Is not covered with a reflective coating, which may impact GPS reception
4. Remove the film from the mount.
5. Ensure that the mount is level with the horizon.
6. Affix the mount securely onto the windshield.
7. Attach the wiring harness to the device.
8. Attach the device to the mounting plate by matching the positions of the three mounting holes on the back of the device with the hooks on the rear plate.
9. Slide the device into the window mount. You will hear a clicking sound when it is secure.

North America

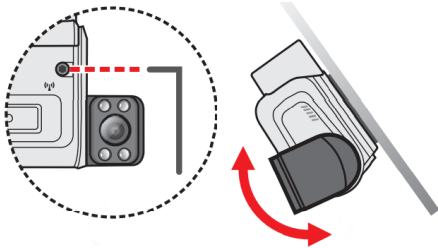


United Kingdom

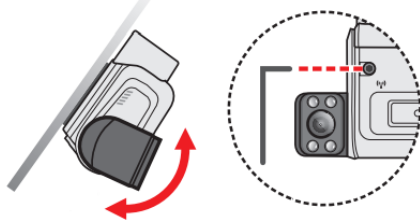


10. Attach the top cover to the camera and tighten the locking screw with an M2 hex key.
11. Cover the exposed cable coming out of the camera with the cable cap. The rubber cap can be trimmed to the desired length with a pair of scissors.
12. Remove the film from the tape on the back of the cable cap and adhere the cap to the windshield.

North America



United Kingdom



13. Loosen each camera's locking screw with an M2 hex key to optimize each camera's views.
14. Log into the **SmartDrive Protect Companion** app.
15. Go to the Dash Cam menu option and select the IMEI of the device that you are installing from the list.
16. Use the Live Preview feature in the app to assist with adjusting each camera's view.
17. For road-facing camera, ensure that the camera's view is parallel to the ground by parking the vehicle on level ground and angle the camera so that the ground to sky ratio is approximately 6 to 4. Tighten the locking screw once the angle is set.
18. For the interior-facing camera, angle the camera so that you can see as much of the driver and cab as possible. Tighten the locking screw once the angle is set.
19. Remove the protective film from each camera's lens.

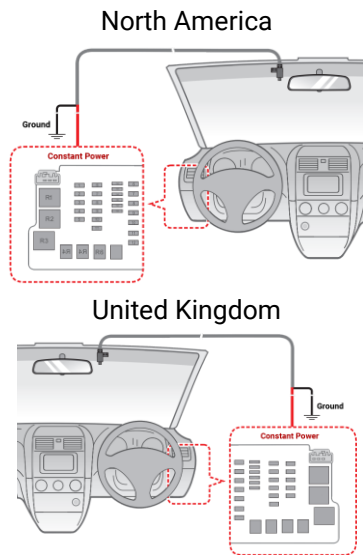
North America



United Kingdom



20. Start the vehicle to test the device.
21. The indicator light will illuminate to show that the device is powering up and turn blue to show that the device is connected via mobile broadband (cellular).
22. Wait about one minute.
North America Only: You will hear audio from the device that the "trip has started," which indicates that the device is operating properly.
UK: You will not hear the audio from the device.



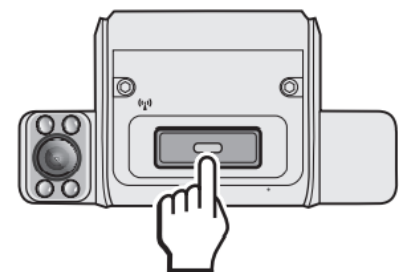
23. Route the wiring harness cable from the device to the fuse box.
24. Secure the cable to the windshield using self-adhesive clips.
25. Roll up or zip tie any excess cabling.

Your device is now ready to go!

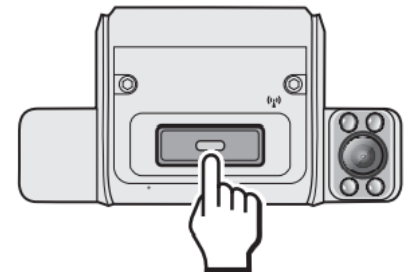
Interacting with the Device

The device will automatically turn on once the vehicle engine is started, and the system will begin continuous recording after a few seconds. If a sudden event, such as running over a road bump, vehicle collision, high-speed driving, or making a sharp turn, has been detected, the onboard sensors will prompt the device to record the event. **You can also press the emergency recording button to record a video manually.**

LED Behavior	Indication
Red (always on)	Normal recording in progress
Red (blinking slowly)	Emergency recording in progress
Red (blinking rapidly)	Memory card error
Cyan	System initializing
Green (always on)	Wi-Fi connected
Blue (always on)	Mobile broadband (cellular) connected
Blue (blinking)	Mobile broadband (cellular) disconnected

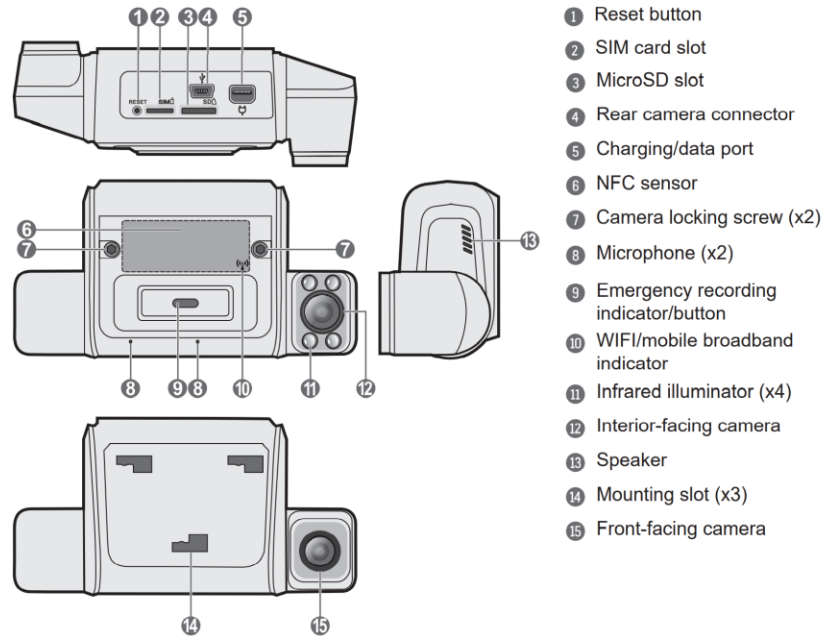


North America

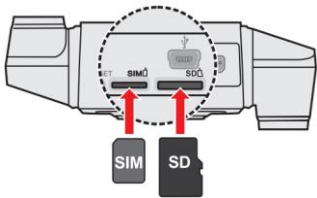
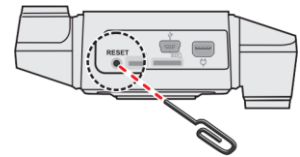


United Kingdom

North America



If the device stops responding for some reason, you can force a hardware reset or reboot. Remove the top cover to access the reset button and press the reset button using a thin, sturdy object, such as a straightened paper clip.

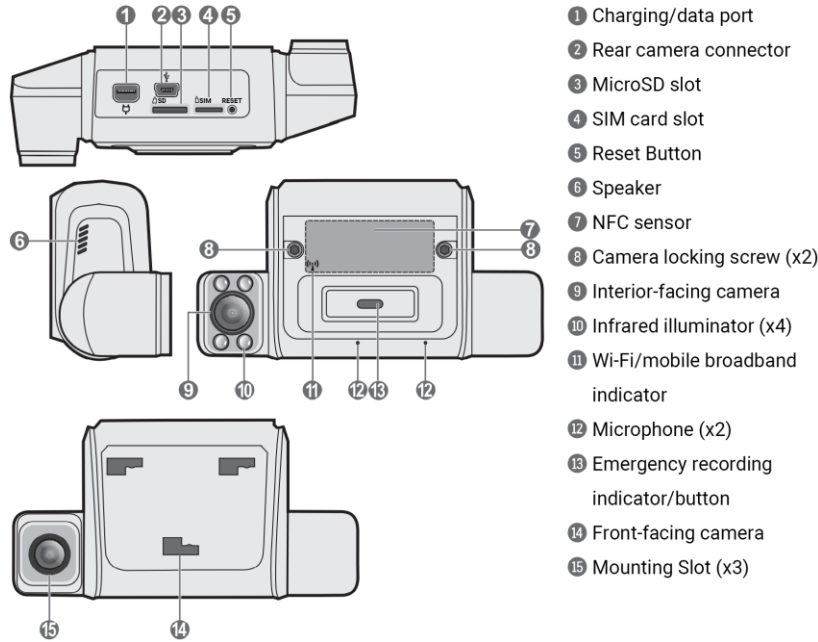


RMA Instructions

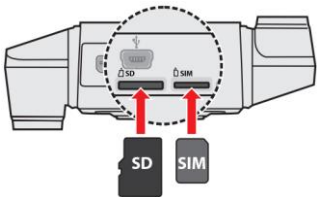
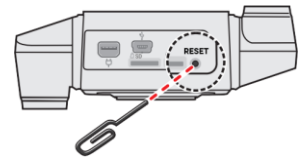
Should you need to return the unit, please do not remove the SIM card.

To remove SD card, gently push the top edge of the card inwards to release it and pull it out of the slot.

United Kingdom



If the device stops responding for some reason, you can force a hardware reset or reboot. Remove the top cover to access the reset button and press the reset button using a thin, sturdy object, such as a straightened paper clip.



RMA Instructions

Should you need to return the unit, please do not remove the SIM card. To remove SD card, gently push the top edge of the card inwards to release it and pull it out of the slot.